



KENTON ROSS FUNERALS

A Caring Funeral Service





KENTON ROSS FUNERALS | EST. 1987 | ABN 74 060 592 574

100% AUSTRALIAN OWNED & OPERATED

A LOCAL FAMILY BUSINESS

LOCATIONS

Kallangur

(07) 3285 5155

1185 Anzac Ave, Kallangur QLD 4503

Woodford

By appointment only

(07) 5496 1787

3/124 Archer St, Woodford QLD 4514

WEBSITE

www.krfunerals.com.au

EMAIL

admin@krfunerals.com.au

POST

PO Box 55, Kallangur, QLD, 4503

Contents

| | |
|--------------------------------------|----|
| ABOUT US | 1 |
| CREMATIONS PACKAGES | 2 |
| BURIAL PACKAGES | 8 |
| COFFINS | 13 |
| CASKETS | 15 |
| ECO-FRIENDLY OPTIONS | 17 |
| STEEL CASKETS | 19 |
| ITEMISED PRICING | 20 |
| COMPLETING YOUR PERSONAL INFORMATION | 22 |



ABOUT US

Kenton Ross Funerals was established in 1987 by Kenton Poole, who brought with him many years of experience from his work in the funeral industry in Mount Isa. Our now Brisbane-based company is built on his hard work and dedication to the families that entrusted their loved-ones to him. Kenton understood that each funeral belonged to the family and, as such, was able to offer families a uniquely personalised funeral service, tailored to their needs and wishes.

Following his passing in July 2008, Kenton's funeral home has continued to service the families of Kallangur and North-Brisbane under the ownership and operation of his son Jason. Jason and his family strive to continue his legacy and share in the same principles and ethos that have always made Kenton Ross Funerals...

‘a caring funeral service’.

“We believe in being sensitive to our clients' needs, remembering that the funeral belongs to the family. As such, we aim to provide the most personal and appropriate funeral for each individual that comes into our care, encouraging families to contribute to their loved-ones' service through spoken word, song, photos or whatever they deem appropriate. The funeral service can then become a true reflection of their loved-one's life and truly honours the person that has meant so much to them.”

Jason Poole - Owner/Managing Director

Aerial photograph of the Kallangur area looking southwest over School Road and Old Gympie Road towards Petrie and the water tower at the junction of Narangba Road, Anzac Avenue and Dohles Rocks Road.

(Image courtesy of city of Moreton Bay | Reference number PRLPC-P0721)



CREMATIONS

Over the years, cremation services have increased across Australia as they are a very affordable alternative to a burial and offer a variety of memorialisation options. After a cremation has taken place, some families choose to scatter their loved-one's ashes in a place special to them, whilst others choose to have the ashes decanted into an urn that will be kept close to them indefinitely. Choosing an appropriate way to memorialise your loved-one is a decision that can take time. That is why Kenton Ross Funeral offers to care for your loved-one until a decision has been made.

We have put together the following cremation options to assist families in understanding the many choices available at Kenton Ross Funerals. Each individual service includes everything necessary for a cremation to take place in the state of Queensland. By choosing one of these options, you can be certain of the package inclusions and the set price. We hope this will be a helpful guide when making a decision that best suits your circumstances and the wishes of your loved-one.

Our staff are also able to customise these packages with options to upgrade or change items if desired. However, pricing may therefore vary. These options can be discussed with your funeral director to ensure we make your loved-one's send off unique and special for all.



DIRECT CREMATION

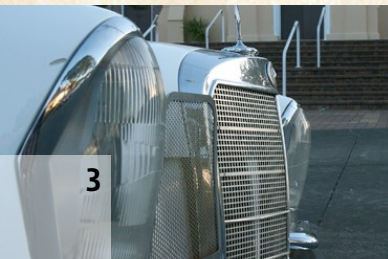
A simple option for families that would like their loved-one privately cremated and the ashes returned to them.

| | | |
|---|--|----------------|
| ESSENTIAL CARE COFFIN | <i>A particle-board shouldered coffin for your loved-one to be cremated in</i> | \$990 |
| DOCTOR'S PERMISSION FOR CREMATION | <i>Required by QLD crematoriums</i> | \$80 |
| TRANSFER & MORTUARY CARE | <i>24/7 with no additional after-hour callout fees</i> | \$795 |
| PRIVATE CREMATION | <i>Performed by the funeral directors at a local crematorium. Family do not attend</i> | \$650 |
| DIRECT CREMATION PROFESSIONAL FEES | <i>In addition to the caring staff that will walk you through the arranging of your loved-one's cremation, our professional fees also include the following:</i> | \$980 |
| <ul style="list-style-type: none">• A highly trained team of funeral professionals that will look after your loved-one in our own mortuary facilities• A hearse for the transfer of your loved-one from our funeral home to crematorium• Death registration with the department of Births, Deaths and Marriages• One (1) certified copy of the death certificate• Crematorium application forms and applicable documentation• Ashes collection, care and holding | | |
| TOTAL PACKAGE PRICE including GST | | \$3,495 |

INTIMATE GOODBYE

Whilst there is still no formal service included with this package, it allows family the chance to come and say goodbye to their loved-one in our private family lounge.

| | | |
|--|---|----------------|
| ALBERT COFFIN | <i>A solid pressed-board shouldered coffin with a maple-look veneer</i> | \$1,195 |
| DOCTOR'S PERMISSION FOR CREMATION | <i>Required by QLD crematoriums</i> | \$80 |
| TRANSFER & MORTUARY CARE | <i>24/7 transfer team with no additional after-hour callout fees</i> | \$795 |
| OPEN OR CLOSED COFFIN VIEWING | <i>Before the cremation takes place, we give you the opportunity to say a private goodbye to your loved one in our private viewing lounge (2-hour booking). Tea, coffee and light refreshments provided. Suitable for family groups of up to 15 people.</i> | \$695 |
| PRIVATE CREMATION | <i>Performed by the funeral directors at a local crematorium. Family do not attend</i> | \$650 |
| INTIMATE GOODBYE PROFESSIONAL FEES | <i>In addition to the caring staff that will walk you through the arranging of your loved-one's cremation, our professional fees also include the following:</i> | \$980 |
| <ul style="list-style-type: none">• A highly trained team of funeral professionals that will look after your loved-one in our own mortuary facilities• A hearse for the transfer of your loved-one from our funeral home to the place of cremation• Death registration with the department of Births, Deaths and Marriages• One (1) certified copy of the death certificate• Crematorium application forms and applicable documentation• Ashes collection, care and holding | | |
| TOTAL PACKAGE PRICE including GST | | \$4,395 |

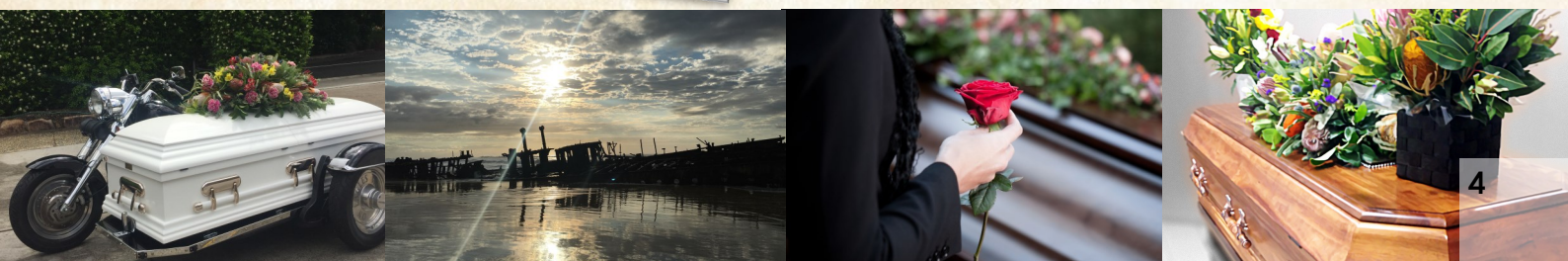




BRONZE CREMATION (SET PACKAGE)

Everything you need for a simple funeral service and cremation.

| | | |
|---|--|----------------|
| CREMATION & CHAPEL HIRE | <i>at a local Brisbane crematorium chapel</i> | \$1,240 |
| ALBERT COFFIN | <i>A solid pressed-board shouldered coffin with a maple-look veneer</i> | \$1,195 |
| FLORAL SPRAY | <i>A small arrangement to adorn the coffin (approx.)</i> | \$250 |
| DOCTOR'S PERMISSION FOR CREMATION | <i>Required by QLD crematoriums</i> | \$80 |
| TRANSFER & MORTUARY CARE | <i>24/7 with no additional after-hour callout fees</i> | \$795 |
| BRONZE CREMATION PROFESSIONAL FEES | <i>In addition to the caring staff that will walk you through the arranging of your loved-one's service, our professional fees also include the following:</i> | \$3,190 |
| <ul style="list-style-type: none"> • A highly trained team of funeral professionals that will look after your loved-one in our own mortuary facilities • A hearse for the transfer of your loved-one from our funeral home to the place of service • Death registration with the department of Births, Deaths and Marriages • Framed photo of your loved one to adorn coffin which will be given to family after service • A private family viewing in our viewing lounge facilities if requested (additional fees may apply where advanced mortuary care is required) • One (1) certified copy of the death certificate • Crematorium application forms and applicable documentation • RSL poppy service if required • Ashes collection, care and holding | | |
| TOTAL PACKAGE PRICE <i>including GST</i> | | \$6,750 |

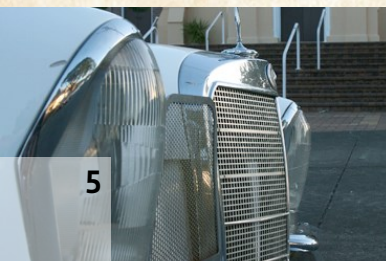




SILVER CREMATION

Can be fully customised to suit your needs

| | | |
|--|--|-----------------|
| CREMATION & CHAPEL HIRE | <i>at a local Brisbane crematorium chapel (approx.)</i> | \$1,240 |
| ENDEAVOUR COFFIN | <i>A solid pine coffin with a raised lid and routed edges (choice of natural or rosewood finish)</i> | \$3,195 |
| FLORAL SPRAY | <i>A traditional-sized arrangement to adorn the coffin</i> | \$350 |
| ORDERS OF SERVICE | <i>50 thoughtfully designed programs unique to your loved-one's service</i> | \$150 |
| FUNERAL CELEBRANT | <i>A professional celebrant to personalise and conduct a service to honour your loved-one</i> | \$550 |
| PICTURE PRESENTATION | <i>Our design team will organise your photos into a beautiful presentation for the day</i> | \$245 |
| DOCTOR'S PERMISSION FOR CREMATION | <i>Required by QLD crematoriums</i> | \$80 |
| TRANSFER & MORTUARY CARE | <i>24/7 with no additional after-hour callout fees</i> | \$795 |
| CREMATION SERVICE PROFESSIONAL FEES | <i>In addition to the caring staff that will walk you through the arranging of your loved-one's service, our professional fees also include the following:</i> | \$3,495 |
| <ul style="list-style-type: none"> • A highly trained team of funeral professionals available 24/7 to assist with your loved-one's service • A hearse for the transfer of your loved-one from our funeral home to the place of service • Memorial signing book design and publication • Photo frame for atop coffin • A private family viewing in our viewing lounge facilities if requested (additional fees may apply where advanced mortuary care is required) • Death registration with Births, Deaths and Marriages • One (1) certified copy of the death certificate • Crematorium application forms and applicable documentation • RSL poppy service if required • Ashes collection, care and holding | | |
| TOTAL PACKAGE PRICE <i>including GST</i> | | \$10,100 |





GOLD CREMATION

Can be fully customised to suit your needs

| | | |
|--|--|-----------------|
| CREMATION & CHAPEL HIRE | <i>at a local Brisbane crematorium chapel (approx.)</i> | \$1,240 |
| MORETON BLACKWOOD CASKET | <i>An elegant casket showcasing beautiful Tasmanian blackwood</i> | \$4,495 |
| FLORAL SPRAY & CHURCH ARRANGEMENTS | <i>A traditional-sized arrangement to adorn the coffin with two potted arrangements to sit either side</i> | \$680 |
| ORDERS OF SERVICE | <i>50 thoughtfully designed programs unique to your loved-one's service</i> | \$150 |
| FUNERAL CELEBRANT | <i>A professional celebrant to personalise and conduct a service to honour your loved-one</i> | \$550 |
| PICTURE PRESENTATION | <i>Our design team will organise your photos into a beautiful presentation for the day</i> | \$245 |
| TRINITY URN | <i>Choose from a selection of urns in our Trinity range</i> | \$446 |
| DOCTOR'S PERMISSION FOR CREMATION | <i>Required by QLD crematoriums</i> | \$80 |
| TRANSFER & MORTUARY CARE | <i>24/7 with no additional after-hour callout fees</i> | \$795 |
| CREMATION SERVICE PROFESSIONAL FEES | <i>In addition to the caring staff that will walk you through the arranging of your loved-one's service, our professional fees also include the following:</i> | \$3,495 |
| <ul style="list-style-type: none"> • A highly trained team of funeral professionals available 24/7 to assist with your loved-one's service • A hearse for the transfer of your loved-one from our funeral home to the place of service • Memorial signing book design and publication • Photo frame for atop coffin • A private family viewing in our viewing lounge facilities if requested (additional fees may apply where advanced mortuary care is required) • Death registration with Births, Deaths and Marriages • One (1) certified copy of the death certificate • Crematorium application forms and applicable documentation • RSL poppy service if required • Ashes collection, care and holding | | |
| TOTAL PACKAGE PRICE <i>including GST</i> | | \$12,176 |





PLATINUM CREMATION

Can be fully customised to suit your needs

| | |
|---|---------|
| CREMATION & CHAPEL HIRE <i>at a local Brisbane crematorium chapel</i> | \$1,240 |
| MONARCH CASKET <i>A beautiful solid poplar casket featuring a shaped dome lid, beige velvet interior, gloss finish and rounded bar handles.</i> | \$5,995 |
| FLORAL SPRAY & CHURCH ARRANGEMENTS <i>A full casket arrangement to adorn the coffin with two potted arrangements to sit either side</i> | \$830 |
| FUNERAL CELEBRANT <i>A professional celebrant to personalise and conduct a service to honour your loved-one</i> | \$550 |
| PICTURE PRESENTATION <i>Our design team will organise your photos into a beautiful presentation for the day</i> | \$245 |
| ORDERS OF SERVICE <i>50 8-page booklets that will guide guests through the service and serve as a unique memento of their lost loved-one, featuring photos, poetry, readings, recipes, paintings or anything you can think of to reflect the life of your loved-one.</i> | \$200 |
| SWAROVSKI TREE OF LIFE URN <i>Created using Bohemian glass making techniques</i> | \$1,119 |
| DOVE RELEASE <i>Two doves to be released by family at the conclusion of the committal</i> | \$350 |
| DOCTOR'S PERMISSION FOR CREMATION <i>Required by QLD crematoriums</i> | \$80 |
| TRANSFER & MORTUARY CARE <i>24/7 with no additional after-hour callout fees</i> | \$795 |
| CREMATION SERVICE PROFESSIONAL FEES <i>In addition to the caring staff that will walk you through the arranging of your loved-one's service, our professional fees also include the following:</i> | \$3,495 |

- A highly trained team of funeral professionals available 24/7 to assist with your loved-one's service
- A hearse for the transfer of your loved-one from our funeral home to the place of service
- Memorial signing book design and publication
- Photo frame for atop coffin
- A private family viewing in our viewing lounge facilities if requested
- Death registration with Births, Deaths and Marriages
- One (1) certified copy of the death certificate
- Crematorium application forms and applicable documentation
- RSL poppy service if required
- Ashes collection, care and holding



TOTAL PACKAGE PRICE *including GST* **\$14,899**



BURIALS

A burial service can take place in a few different ways. You may choose to begin the service at the cemetery chapel or a local church and then proceed to the graveside, inviting the entire congregation to attend, or perhaps only having family and close friends at the committal. Alternatively, families may choose to have the full service at the graveside with rows of chairs set up across the lawn and portable sound equipment being used to amplify voice and song.

We like to be as flexible as possible when it comes to planning services across multiple sites, so if you have an idea on how you would like the day to run, talk to your funeral director and we'll make it happen. Your funeral director/s will be present on the day to support you, your family and friends as your loved-one is laid to rest.

By choosing one of our burial options, you can be certain of the package inclusions and the set price. We hope this will be a helpful guide when making a decision that best suits your needs, circumstances and the wishes of your loved-one. Our staff are also able to customise these packages, with options to upgrade or change items if desired. However, pricing may therefore vary.

It is important to be aware that certain cemeteries may have particular requirements before they will allow a burial on their grounds. Specific requirements are typically set by small country-town cemeteries that reserve their land for people with family and/or historical ties to their township. Also, each individual cemetery has their own burial/internment fee structures. As such, the prices noted in our packages over leaf do not include those fees. Your funeral director will be able to advise the relevant fees based on your choice of cemetery.





BRONZE BURIAL

A simple option for families that would like their loved-one's service held at the graveside only.

ALBERT COFFIN *A solid pressed-board shouldered coffin with a maple-look veneer* \$1,195

FLORAL SPRAY *A small arrangement to adorn the coffin* \$250

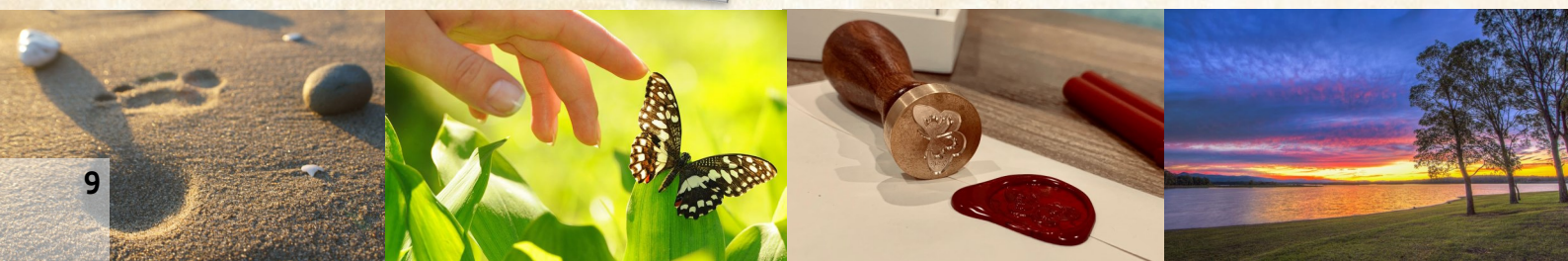
TRANSFER & MORTUARY CARE *24/7 with no additional after-hour callout fees* \$795

BRONZE BURIAL PROFESSIONAL FEES *In addition to the caring staff that will walk you through the arranging of your loved-one's service, our professional fees also include the following:* \$3,190

- A highly trained team of funeral professionals that will look after your loved-one in our own mortuary facilities
- A hearse for the transfer of your loved-one from our funeral home to the place of service
- BOSE PA system hire
- Death registration with the department of Births, Deaths and Marriages
- One (1) certified copy of the death certificate
- Cemetery application forms and applicable documentation
- RSL poppy service if required

NOTE: *Burial fees are not included in this package*

TOTAL PACKAGE PRICE *including GST* **\$5,430**





SILVER BURIAL

Can be fully customised to suit your needs

| | | |
|---|--|--|
| CHAPEL HIRE | <i>Service held in a local chapel before the burial takes place at the chosen cemetery (approx.)</i> | \$600 |
| ENDEAVOUR COFFIN | <i>A solid pine coffin with a raised lid and routed edges (choice of natural or rosewood finish)</i> | \$3,195 |
| FLORAL SPRAY | <i>A traditional-sized arrangement to adorn the coffin</i> | \$350 |
| ORDERS OF SERVICE | <i>50 thoughtfully designed programs unique to your loved-one's service</i> | \$150 |
| FUNERAL CELEBRANT | <i>A professional celebrant to personalise and conduct a service to honour your loved-one</i> | \$550 |
| PICTURE PRESENTATION | <i>Our design team will organise your photos into a beautiful presentation for the day</i> | \$245 |
| TRANSFER & MORTUARY CARE | <i>24/7 with no additional after-hour callout fees</i> | \$795 |
| BURIAL SERVICE PROFESSIONAL FEES | <i>In addition to the caring staff that will walk you through the arranging of your loved-one's service, our professional fees also include the following:</i> | \$3,495 |
| <ul style="list-style-type: none"> • A highly trained team of funeral professionals available 24/7 to assist with your loved-one's service • A hearse for the transfer of your loved-one from our funeral home to the place of service • Memorial signing book design and publication • Photo frame for atop coffin • A private family viewing in our viewing lounge facilities if requested • Death registration with Births, Deaths and Marriages • One (1) certified copy of the death certificate • Crematorium application forms and applicable documentation • RSL poppy service if required | | |
| NOTE: Burial fees are not included in this package | | TOTAL PACKAGE PRICE including GST \$9,380 |





GOLD BURIAL

Can be fully customised to suit your needs

| | | |
|---|--|---------|
| CHAPEL HIRE | <i>Service held in a local chapel before the burial takes place at the chosen cemetery (approx.)</i> | \$600 |
| MORETON BLACKWOOD | <i>an elegant casket showcasing beautiful Tasmanian blackwood</i> | \$4,495 |
| FLORAL SPRAY & CHURCH ARRANGEMENTS | <i>A traditional-sized arrangement to adorn the coffin with two potted arrangements to sit either side</i> | \$680 |
| ORDERS OF SERVICE | <i>50 thoughtfully designed programs unique to your loved-one's service</i> | \$150 |
| FUNERAL CELEBRANT | <i>A professional celebrant to build and conduct a service to honour your loved-one's life</i> | \$550 |
| PICTURE PRESENTATION | <i>Our design team will organise your photos into a beautiful presentation for the day</i> | \$245 |
| TRANSFER & MORTUARY CARE | <i>24/7 with no additional after-hour callout fees</i> | \$795 |
| PROFESSIONAL FEES | <i>In addition to the caring staff that will walk you through the arranging of your loved-one's service, our professional fees also include the following:</i> | \$3,495 |
| <ul style="list-style-type: none"> • A highly trained team of funeral professionals available 24/7 to assist with your loved-one's service • A hearse for the transfer of your loved-one from our funeral home to the place of service • Memorial signing book design and publication • Photo frame for atop coffin • A private family viewing in our viewing lounge facilities if requested • Death registration with Births, Deaths and Marriages • One (1) certified copy of the death certificate • Crematorium application forms and applicable documentation • RSL poppy service if required | | |

NOTE: Burial fees are not included in this package

TOTAL PACKAGE PRICE including GST **\$11,010**

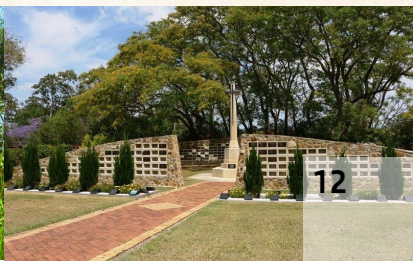




PLATINUM BURIAL

Can be fully customised to suit your needs

| | | |
|--|--|---|
| CHAPEL HIRE | <i>Service held in a local chapel before the burial takes place at the chosen cemetery</i> | \$600 |
| MONARCH CASKET | <i>A beautiful solid poplar casket featuring a shaped dome lid, beige velvet interior, gloss finish and rounded bar handles.</i> | \$5,995 |
| FLORAL SPRAY & CHURCH ARRANGEMENTS | <i>A full casket arrangement to adorn the coffin with two potted arrangements to sit either side</i> | \$830 |
| FUNERAL CELEBRANT | <i>A professional celebrant to build and conduct a service to honour your loved-one's life</i> | \$550 |
| PICTURE PRESENTATION | <i>Our design team will organise your photos into a beautiful presentation for the day</i> | \$245 |
| ORDERS OF SERVICE | <i>50 8-page booklets that will guide guests through the service and serve as a unique memento of their lost loved-one, showcasing photos, poetry, readings, recipes, paintings or anything you can think of to reflect the life of your loved-one. Each pamphlet has a personalised bookmark placed inside.</i> | \$200 |
| TRANSFER & MORTUARY CARE | <i>24/7 with no additional after-hour callout fees</i> | \$795 |
| DOVE RELEASE | <i>Two doves to be released by family at the conclusion of the committal</i> | \$350 |
| PROFESSIONAL FEES | <i>In addition to the caring staff that will walk you through the arranging of your loved-one's service, our professional fees also include the following:</i> | \$3,495 |
| <ul style="list-style-type: none"> • A highly trained team of funeral professionals available 24/7 to assist with your loved-one's service • A hearse for the transfer of your loved-one from our funeral home to the place of service • Memorial signing book design and publication • Photo frame for atop coffin • A private family viewing in our viewing lounge facilities if requested • Death registration with Births, Deaths and Marriages • One (1) certified copy of the death certificate • Cemetery application forms and applicable documentation • RSL poppy service if required | | |
| NOTE: Burial fees are not included in this package | | TOTAL PACKAGE PRICE including GST \$13,060 |



COFFINS



ALBERT

\$1,195.00

- Paper Veneered Composite Board
- Maple, Matt Finish



COOTHARABA

\$1,495.00

- Paper Veneered Composite Board
- Oak, Matt Finish
- Single Raised Lid



OXLEY

\$1,795.00

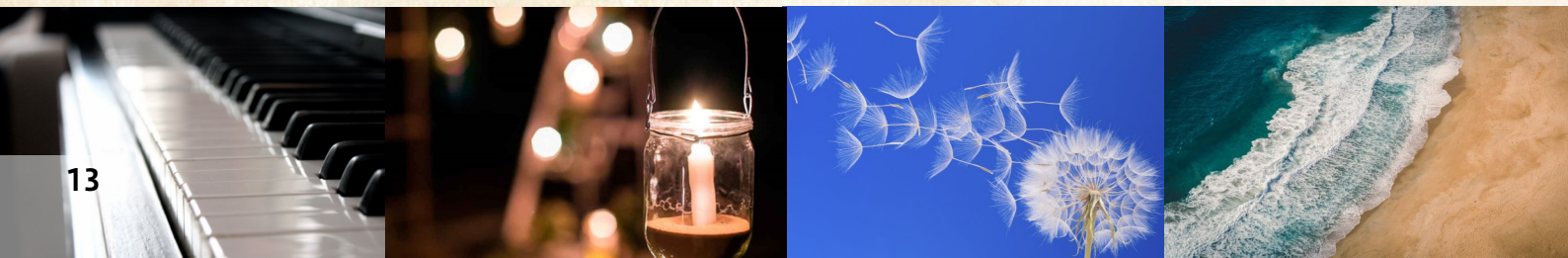
- Paper Veneered Composite Board
- Teak with Walnut Shade, Gloss Finish
- Single Raised Lid
- Fluted Mouldings



MAROON

\$2,095.00

- Paper Veneered Composite Board
- Rosewood Colour, Gloss Finish
- High Tiered Lid
- Fluted Base Mould



COFFINS



RUNDLE

\$2,495.00

- Timber Veneered Composite Board
- Walnut Colour, Gloss Finish
- Scalloped Lid
- Routed Sides



SUSAN

\$2,345.00

- Paper Veneered Composite Board
- White Colour, Gloss Finish
- Single Raised Lid
- Base Mould



GEORGINA

\$2,795.00

- Paper Veneered Composite Board
- Metallic Colour Finish
- Single Raised Lid
- Routed Lid and Sides



ENDEAVOUR

\$3,195.00

- Solid Plantation Pine
- Choice of Clear or Rosewood Finish
- High Tiered Lid
- Three Side Panels and Fluted Base Mould



COFFINS



BRISBANE

\$3,495.00

- Solid Sapele
- Low Sheen Finish
- Contemporary Design & Curved Lid
- Elegant Brass Handles



CAMPHOR LAUREL

\$3,895.00

- Solid Camphor Laurel
- Gloss Finish
- Single Raised Lid
- Timber Swing Bar Handles



BLACKWOOD

\$3,895.00

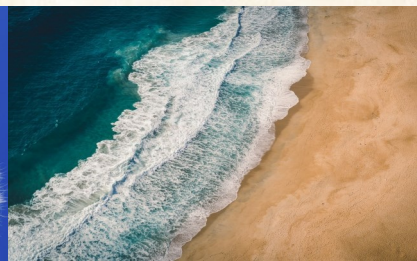
- Solid Tasmanian Blackwood
- Low Sheen, Natural Finish
- Carved Corners & Fluted Mouldings
- Timber Swing Bar Handles



AMBASSADOR

\$3,895.00

- Solid Cedar
- Gloss Finish
- Sculpted Double Raised Lid with Corner Pillars
- Fluted Moulding



CASKETS



NORMANBY

\$3,195.00

- Solid Plantation Pine
- Walnut Colour, Gloss Finish
- Full-Couch Hinged Lid
- White Satin Drapery



MORETON ROSEWOOD

\$3,495.00

- Solid Plantation Pine with Rosewood Gloss Finish
- Full-Couch Hinged Lid
- Octagonal End Design
- Ivory Satin Drapery



MORETON BLACKWOOD

\$4,495.00

- Solid Tasmanian Blackwood with Natural Low-Sheen Finish
- Full-Couch Hinged Lid
- Octagonal End Design
- Deluxe Cream Satin Drapery



HEAVENLY WHITE

\$5,995.00

- Solid Poplar in White Gloss Finish
- Domed Half-Couch Hinged Lid
- Mist Copper Tone Swing Bar Handles on All Sides
- White Crepe Interior



CASKETS



MONARCH

\$5,995.00

- Solid Poplar in American Cherry with High Gloss Finish
- Domed Half-Couch Hinged Lid
- Timber Handles on All Sides
- Champagne Linen Interior



DA VINCI

\$8,500.00

- Solid Maple in Antique Cherry with High Gloss Finish
- Domed Half-Couch Hinged Lid
- Da Vinci's Last Supper and Pietà Adornments
- Beige Velvet Interior



BORDEAUX

\$12,000.00

- Solid Cherry in Garnet with Hand Polished, High Gloss Finish
- Domed Half-Couch Hinged Lid
- Elegant Gold Mylar Beading with Rounded Timber Handles
- Ivory Basket Weave Interior



ECO-FRIENDLY OPTIONS



NORTH PINE

\$2,095.00

- Solid Plantation Pine
- Raw Finish
- Six Rope Handles
- Unbleached Calico Lining



WICKER

\$2,345.00

- 100% Basketry Wicker
- Rounded Ends with Rope Handles
- Biodegradable Lining
- Cotton Calico Drapery



NORTH PINE CASKET

\$2,395.00

- Solid Plantation Pine
- Raw Finish
- Six Rope Handles
- Unbleached Calico Lining



PELOTAGE

\$2,795.00

- Natural Pure New Wool Outer Layer
- Strong Frame Made from Recycled Materials
- Generously Lined with Cotton
- Complete with Woollen Mattress and Cotton Pillow



STEEL CASKETS

FOR BURIALS & VAULTS



EL DORADO

\$18,000.00

- 48 oz Solid Bronze
- Classic Midnight Brushed Finish
- 14 Carat Gold Plated Hardware
- Pearl Velvet Interior



PURITAN

\$9,500.00

- 16 Gauge Steel
- Brushed Copper Glow & Autumn Finish
- Artubus Velvet Interiors
- Da Vinci's Last Supper and Pietà Adornments



GARRISON

\$8,500.00

- 18 Gauge Steel
- Rich Cashmere Grey Finish
- Cap Panel allows for Display of Photos
- Ivory Basket Weave Interior



WHITE ROSE

\$7,500.00

- 18 Gauge Steel
- White with Rose Shaded Finish
- Embroidered Rose Cap Panel
- Shirred Light Pink Velvet Interior

| STIPULATED FUNERAL SERVICES & PRODUCTS | | |
|---|------------------------------------|--------|
| | Cremation | Burial |
| PROFESSIONAL FEES This fee includes: <ul style="list-style-type: none"> - a highly trained team of funeral professionals. - a hearse for the transfer of your loved-one from our funeral home to the place of service. - death registration with the department of Births, Deaths and Marriages. - one (1) certified copy of the death certificate - crematorium/cemetery application forms and applicable documentation. - digital enhancement and framing of photo. - personalised, printed and bound hardback memorial book. - secure ashes holding (up to 12 months). | \$3,495.00 (GST included) | |
| TRANSFER & MORTUARY CARE This fee includes: <ul style="list-style-type: none"> - transfer of the deceased from place of death or holding to our funeral home mortuary if transfer is made within 100 km of our mortuary. Transfers outside of 100 km will be charged at a rate of \$1.00 per km over 100 km. - holding, care and preparation of the deceased in our own private mortuary prior to cremation or burial (additional fees may apply for caring for the deceased over for an extended duration). | \$795.00 (GST included) | |
| CASKETS & COFFINS Fee pertains to standard-size adult coffins/caskets only. Prices for other sizes are available upon request. | \$990.00 - \$18,000 (GST included) | |
| OPEN COFFIN SERVICE/VIEWING No charge, provided a viewing of the deceased is appropriate without the need for advanced mortuary care due to trauma or decomposition. | \$0.00 | |
| ADVANCED MORTUARY CARE Necessary for families wishing to view deceased where severe trauma or decomposition is present. | \$400.00 - \$980.00 (GST included) | |

| DISBURSEMENTS* (Fees paid to third party providers) | | |
|---|-----------------------------------|--------|
| | Cremation | Burial |
| CREMATION & CHAPEL HIRE This fee: <ul style="list-style-type: none"> - applies to local Brisbane crematorium chapels. - is an estimate based on an average of all local crematorium chapels. - is subject to change. | From \$1,240.00 (GST included) | N/A |
| BURIAL FEES | N/A | POA |
| THIRD PARTY LIVESTREAM/FILMOGRAPHY | From \$770 | |
| CHAPEL LIVESTREAMING | From \$0 POA | |
| CHAPEL HIRE | POA | |
| ADDITIONAL DEATH CERTIFICATES | \$60.00 each (GST included) | |
| DOCTOR'S CREMATION PERMISSION | \$80.00 (GST included) | N/A |
| *Additional disbursements are available not mentioned above. | | |

| OPTIONAL PRODUCTS & SERVICES AVAILABLE | |
|--|--|
| FUNERAL CELEBRANT A professional celebrant to build and conduct a service to honour your loved-one's life, including an appointment at a location of your choosing prior to the service to discuss the content of the service. | From \$550.00 <i>(GST included)</i> |
| ORDERS OF SERVICE Thoughtfully designed programs unique to your loved-one's service | Design & proofing : \$100.00 <i>(GST included)</i> Price per sheet : \$1.00 <i>(GST included)</i> |
| PICTURE PRESENTATION Our design team will organise your photos into a beautiful slideshow presentation for the day | \$245.00 <i>(GST included)</i> |
| URNS & KEEPSAKES | \$50.00 - \$1500.00 <i>(GST included)</i> |
| CELEBRANT FEE (APPROX.) A professional celebrant to build and conduct a service to honour your loved-one's life | \$500.00 <i>(GST included)</i> |
| FLORAL TRIBUTES (APPROX.) | Small Spray : \$250.00 <i>(GST included)</i> Medium Spray : \$350.00 <i>(GST included)</i> Large Spray : \$500.00 <i>(GST included)</i> Pot/Vase Arrangement : \$150.00 <i>(GST included)</i> |
| *Additional products and services are available not mentioned above. | |



PERSONAL INFORMATION FOR DEATH REGISTRATION

Name: _____

Address: _____

Date of birth: ____/____/____

City/Town of birth: _____

If not born in Australia year arrived: _____

Occupation during working life: _____

Retired: Yes / No

Aboriginal / Torres Strait Islander / Both / Neither

Marriage status: _____

If widowed, place and date of death of wife/husband:

First Marriage Details (if applicable)

Place of marriage: _____

Age at marriage: _____

Spouse (Full name prior to marriage):

Second Marriage Details (if applicable)

Place of marriage: _____

Age at marriage: _____

Spouse (Full name prior to marriage):

Children

[illegible]

Father

Name: _____

Occupation: _____

Mother

Name (full maiden name): _____

Occupation: _____

NOTES

This image shows a full page of blank white paper with horizontal blue ruling lines. The lines are evenly spaced and run across the width of the page, providing a guide for writing. There are no margins, text, or other markings on the page.

FUNERAL REQUESTS

Cremation / Burial

Personal items to adorn coffin:

Church / Chapel / Other: _____

Address of Service: _____

Viewing: Yes / No

Eulogy/Tributes to be spoken by:

RSL Service: Yes / No

Music:

Special Requests:

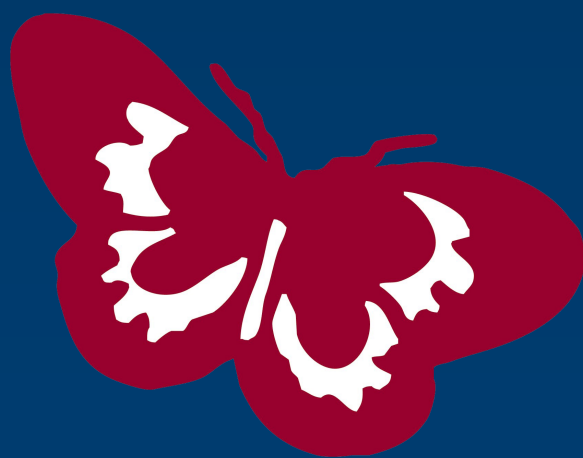
Minister/Celebrant:

Poems/Readings/Prayers:

Flowers (type | colour | size):

Don't forget that the funeral belongs to you and your family. Don't feel as though you're bound by what you see on this page. In the past, we have opened funeral services with the audio from the Melbourne Cup, printed secret hand-written cookie recipes into the orders of service, parked a motorcycle next to the coffin inside the chapel, invited family and friends forward to write thoughts and prayers on the coffin and much more. The more information you give us, the more we can help you and your family make this farewell a unique one that will be remembered with fondness and love for years to come.





Kenton Ross Funerals

krfunerals.com.au