

Kenton Ross Funerals

A Caring Funeral Service



AUSTRALIAN
FUNERAL
DIRECTORS
ASSOCIATION



LOCATIONS

Kallangur | Head Office

(07) 3285 5155

1185 Anzac Ave, Kallangur QLD, 4503

Coopers Plains

By appointment only

(07) 3848 8666

2/21 Alton St, Coopers Plains QLD 4108

Raceview

By appointment only

(07) 3450 9781

10 Sonia Ct, Raceview QLD 4305

Toowoomba

By appointment only

(07) 3285 5155

3/45 Stephen Street, South Toowoomba

Woodford

By appointment only

(07) 5496 1787

3/124 Archer St, Woodford QLD 4514

WEBSITE

www.krfunerals.com.au

EMAIL

admin@krfunerals.com.au

POST

PO Box 55, Kallangur, QLD, 4503

contents

ABOUT US	1
CREMATIONS PACKAGES	2
BURIAL PACKAGES	8
COFFINS	13
CASKETS	16
ECO-FRIENDLY OPTIONS	18
STEEL CASKETS	19
PREARRANGING A FUNERAL	20
COMPLETING YOUR PERSONAL INFORMATION	21



ABOUT US

Kenton Ross Funerals was established in 1987 by Kenton Poole, who brought with him many years of experience from his work in the funeral industry in Mount Isa.

Our now Brisbane-based company is built on his hard work and dedication to the families that entrusted their loved-ones to him. Kenton understood that each funeral belonged to the family and, as such, was able to offer families a uniquely personalised funeral service, tailored to their needs and wishes.

Following his passing in July 2008, Kenton's funeral home has continued to service the families of Kallangur and North-Brisbane under the ownership and operation of his son Jason. Jason and his family strive to continue his legacy and share in the same principles and ethos that have always made Kenton Ross Funerals 'a caring funeral service'.

"We believe in being sensitive to our clients' needs, remembering that the funeral belongs to the family. As such, we aim to provide the most personal and appropriate funeral for each individual that comes into our care, encouraging families to contribute to their loved-ones' service through spoken word, song, photographic tribute or whatever they deem appropriate. The funeral service can then become a true reflection of their lost loved-one's life and truly honours the person that has meant so much to them."

Jason Poole - Owner/Managing Director



CREMATIONS

Over the years, cremation services have increased in popularity across Australia as they are a very affordable alternative to a burial and offer a variety of memorialisation options. After a cremation has taken place, some families choose to scatter their loved-one's ashes in a place special to them, whilst others choose to have the ashes decanted into an urn that will be kept close to them indefinitely. Choosing an appropriate way to memorialise your loved-one is a decision that can take time. That is why Kenton Ross Funeral offers to care for your loved-one's cremated remains until a decision has been made.

We have put together the following cremation options to assist families in understanding the many choices available at Kenton Ross Funerals. Each individual service includes everything necessary for a cremation to take place in the state of Queensland. By choosing one of these options, you can be certain of the package inclusions and the set price. We hope this will be a helpful guide when making a decision that best suits your needs, circumstances and the wishes of your loved-one.

Our staff are also able to customise these packages, with options to upgrade or change items if desired. However, pricing may therefore vary. These options can be discussed with your caring funeral director to ensure we make your loved-one's send off unique and special for all.



DIRECT CREMATION

A simple option for families that would like their loved-one privately cremated and the ashes returned to them.

ESSENTIAL CARE COFFIN	<i>A particle-board shouldered coffin for your loved-one to be cremated in</i>	\$990
DOCTOR'S PERMISSION FOR CREMATION	<i>Required by QLD crematoriums</i>	\$80
TRANSFER & MORTUARY CARE	<i>24/7 with no additional after-hour callout fees</i>	\$795
PRIVATE CREMATION	<i>Performed by the funeral directors at a local crematorium. Family do not attend</i>	\$650
PROFESSIONAL FEES	<i>In addition to the caring staff that will walk you through the arranging of your loved-one's cremation, our professional fees also include the following:</i>	\$980
<ul style="list-style-type: none">• A highly trained team of funeral professionals that will look after your loved-one in our own mortuary facilities• A hearse for the transfer of your loved-one from our funeral home to crematorium• Death registration with the department of Births, Deaths and Marriages• One (1) certified copy of the death certificate• Crematorium application forms and applicable documentation• Ashes collection, care and holding		
TOTAL PACKAGE PRICE		<i>including GST</i> \$3,495

INTIMATE GOODBYE

Whilst there is still no formal service included with this package, it allows family the chance to come and say goodbye to their loved-one in our private family lounge.

ALBERT COFFIN	<i>A solid pressed-board shouldered coffin with a maple-look veneer</i>	\$1,195
DOCTOR'S PERMISSION FOR CREMATION	<i>Required by QLD crematoriums</i>	\$80
TRANSFER & MORTUARY CARE	<i>24/7 transfer team with no additional after-hour callout fees</i>	\$795
OPEN OR CLOSED COFFIN VIEWING	<i>Before the cremation takes place, we give you the opportunity to say a private goodbye to your loved one in our private viewing lounge (2-hour booking). Tea, coffee and light refreshments provided. Suitable for family groups of up to 15 people.</i>	\$695
PRIVATE CREMATION	<i>Performed by the funeral directors at a local crematorium. Family do not attend</i>	\$650
PROFESSIONAL FEES	<i>In addition to the caring staff that will walk you through the arranging of your loved-one's cremation, our professional fees also include the following:</i>	\$980
<ul style="list-style-type: none">• A highly trained team of funeral professionals that will look after your loved-one in our own mortuary facilities• A hearse for the transfer of your loved-one from our funeral home to the place of cremation• Death registration with the department of Births, Deaths and Marriages• One (1) certified copy of the death certificate• Crematorium application forms and applicable documentation• Ashes collection, care and holding		
TOTAL PACKAGE PRICE		<i>including GST</i> \$4,395

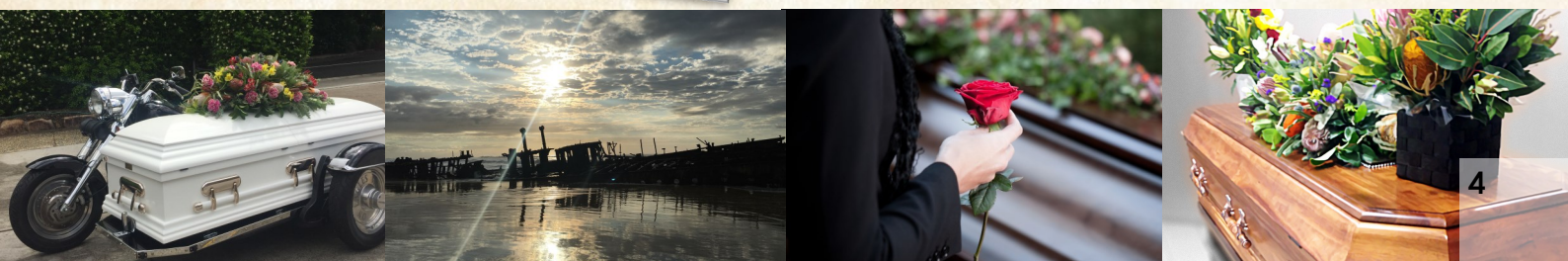




BRONZE CREMATION

Everything you need for a simple funeral service and cremation.

CREMATION & CHAPEL HIRE	<i>at a local Brisbane crematorium chapel</i>	\$1,240
ALBERT COFFIN	<i>A solid pressed-board shouldered coffin with a maple-look veneer</i>	\$1,195
FLORAL SPRAY	<i>A small arrangement to adorn the coffin (approx.)</i>	\$200
DOCTOR'S PERMISSION FOR CREMATION	<i>Required by QLD crematoriums</i>	\$80
TRANSFER & MORTUARY CARE	<i>24/7 with no additional after-hour callout fees</i>	\$795
PROFESSIONAL FEES	<i>In addition to the caring staff that will walk you through the arranging of your loved-one's service, our professional fees also include the following:</i>	\$2,989
<ul style="list-style-type: none"> • A highly trained team of funeral professionals that will look after your loved-one in our own mortuary facilities • A hearse for the transfer of your loved-one from our funeral home to the place of service • Death registration with the department of Births, Deaths and Marriages • One (1) certified copy of the death certificate • Crematorium application forms and applicable documentation • RSL poppy service if required • Photo frame for atop coffin • Assistance with plaque applications • Ashes collection, care and holding 		
TOTAL PACKAGE PRICE <i>including GST</i>		\$6,499





SILVER CREMATION

CREMATION & CHAPEL HIRE	<i>at a local Brisbane crematorium chapel</i>	\$1,240
ENDEAVOUR COFFIN	<i>A solid pine coffin with a raised lid and routed edges (choice of natural or rosewood finish)</i>	\$3,195
FLORAL SPRAY	<i>A traditional-sized arrangement to adorn the coffin</i>	\$300
ORDERS OF SERVICE	<i>50 thoughtfully designed programs unique to your loved-one's service</i>	\$125
FUNERAL CELEBRANT	<i>A professional celebrant to personalise and conduct a service to honour your loved-one</i>	\$450
PICTURE PRESENTATION	<i>Our design team will organise your photos into a beautiful presentation for the day</i>	\$195
DOCTOR'S PERMISSION FOR CREMATION	<i>Required by QLD crematoriums</i>	\$80
TRANSFER & MORTUARY CARE	<i>24/7 with no additional after-hour callout fees</i>	\$795
PROFESSIONAL FEES	<i>In addition to the caring staff that will walk you through the arranging of your loved-one's service, our professional fees also include the following:</i>	\$3,495
<ul style="list-style-type: none"> • A highly trained team of funeral professionals available 24/7 to assist with your loved-one's service • A hearse for the transfer of your loved-one from our funeral home to the place of service • Memorial signing book design and publication • Photo frame for atop coffin • A private family viewing in our viewing lounge facilities if requested • Death registration with Births, Deaths and Marriages • One (1) certified copy of the death certificate • Crematorium application forms and applicable documentation • RSL poppy service if required • Ashes collection, care and holding 		
TOTAL PACKAGE PRICE <i>including GST</i>		\$9,875





GOLD CREMATION

CREMATION & CHAPEL HIRE	<i>at a local Brisbane crematorium chapel</i>	\$1,240
MORETON BLACKWOOD CASKET	<i>An elegant casket showcasing beautiful Tasmanian blackwood</i>	\$4,495
FLORAL SPRAY & CHURCH ARRANGEMENTS	<i>A traditional-sized arrangement to adorn the coffin with two potted arrangements to sit either side</i>	\$630
ORDERS OF SERVICE	<i>50 thoughtfully designed programs unique to your loved-one's service</i>	\$125
FUNERAL CELEBRANT	<i>A professional celebrant to personalise and conduct a service to honour your loved-one</i>	\$450
PICTURE PRESENTATION	<i>Our design team will organise your photos into a beautiful presentation for the day</i>	\$195
TRINITY URN	<i>Choose from a selection of urns in our Trinity range</i>	\$446
DOCTOR'S PERMISSION FOR CREMATION	<i>Required by QLD crematoriums</i>	\$80
TRANSFER & MORTUARY CARE	<i>24/7 with no additional after-hour callout fees</i>	\$795
PROFESSIONAL FEES	<i>In addition to the caring staff that will walk you through the arranging of your loved-one's service, our professional fees also include the following:</i>	\$3,495
<ul style="list-style-type: none"> • A highly trained team of funeral professionals available 24/7 to assist with your loved-one's service • A hearse for the transfer of your loved-one from our funeral home to the place of service • Memorial signing book design and publication • Photo frame for atop coffin • A private family viewing in our viewing lounge facilities if requested • Death registration with Births, Deaths and Marriages • One (1) certified copy of the death certificate • Crematorium application forms and applicable documentation • RSL poppy service if required • Ashes collection, care and holding 		
TOTAL PACKAGE PRICE <i>including GST</i>		\$11,951





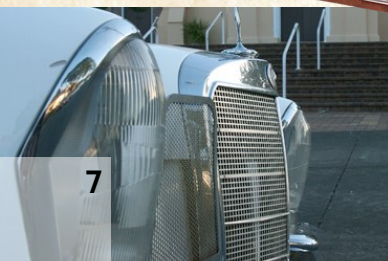
PLATINUM CREMATION

CREMATION & CHAPEL HIRE <i>at a local Brisbane crematorium chapel</i>	\$1,240
DA VINCI CASKET <i>A beautiful solid maple casket featuring a shaped dome lid, beige velvet interior, gloss finish and rounded bar handles. This amazing casket also comes with a keepsake Pieta Statue</i>	\$8,500
FLORAL SPRAY & CHURCH ARRANGEMENTS <i>A full casket arrangement to adorn the coffin with two potted arrangements to sit either side</i>	\$780
FUNERAL CELEBRANT <i>A professional celebrant to personalise and conduct a service to honour your loved-one</i>	\$450
PICTURE PRESENTATION <i>Our design team will organise your photos into a beautiful presentation for the day</i>	\$195
ORDERS OF SERVICE <i>75 8-page booklets that will guide guests through the service and serve as a unique memento of their lost loved-one, featuring photos, poetry, readings, recipes, paintings or anything you can think of to reflect the life of your loved-one.</i>	\$225
SWAROVSKI TREE OF LIFE URN <i>Created using Bohemian glass making techniques</i>	\$1,119
DOVE RELEASE <i>Two doves to be released by family at the conclusion of the committal</i>	\$275
DOCTOR'S PERMISSION FOR CREMATION <i>Required by QLD crematoriums</i>	\$80
TRANSFER & MORTUARY CARE <i>24/7 with no additional after-hour callout fees</i>	\$795
PROFESSIONAL FEES <i>In addition to the caring staff that will walk you through the arranging of your loved-one's service, our professional fees also include the following:</i>	\$3,495

- A highly trained team of funeral professionals available 24/7 to assist with your loved-one's service
- A hearse for the transfer of your loved-one from our funeral home to the place of service
- Memorial signing book design and publication
- Photo frame for atop coffin
- A private family viewing in our viewing lounge facilities if requested
- Death registration with Births, Deaths and Marriages
- One (1) certified copy of the death certificate
- Crematorium application forms and applicable documentation
- RSL poppy service if required
- Ashes collection, care and holding



TOTAL PACKAGE PRICE *including GST* **\$17,154**



BURIALS

A burial service can take place in a few different ways. You may choose to begin the service at the cemetery chapel or a local church and then proceed to the graveside, inviting the entire congregation to attend, or perhaps only having family and close friends at the committal. Alternatively, families may choose to have the full service at the graveside with rows of chairs set up across the lawn and portable sound equipment being used to amplify voice and song.

We like to be as flexible as possible when it comes to planning services across multiple sites, so if you have an idea on how you would like the day to run, talk to your funeral director and we'll make it happen. Your funeral director/s will be present on the day to support you, your family and friends as your loved-one is laid to rest.

By choosing one of our burial options, you can be certain of the package inclusions and the set price. We hope this will be a helpful guide when making a decision that best suits your needs, circumstances and the wishes of your loved-one. Our staff are also able to customise these packages, with options to upgrade or change items if desired. However, pricing may therefore vary.

It is important to be aware that certain cemeteries may have particular requirements before they will allow a burial on their grounds. Specific requirements are typically set by small country-town cemeteries that reserve their land for people with family and/or historical ties to their township. Also, each individual cemetery has their own burial/internment fee structures. As such, the prices noted in our packages over leaf do not include those fees. Your funeral director will be able to advise the relevant fees based on your choice of cemetery.

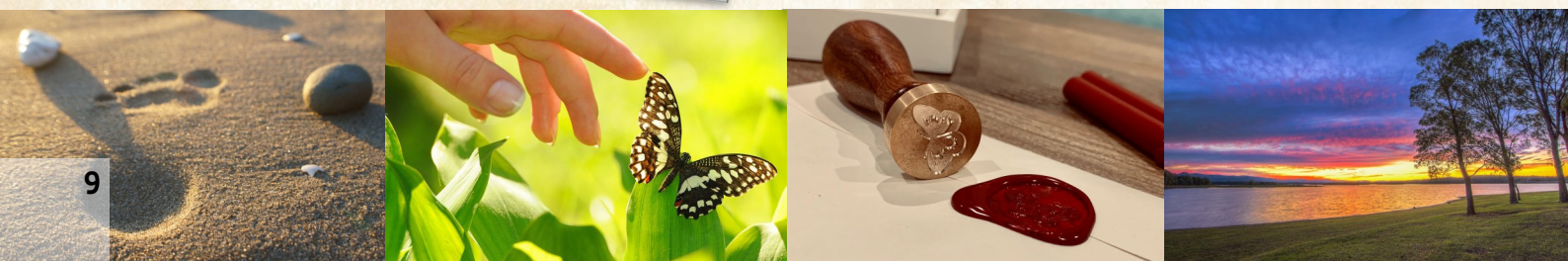




BRONZE BURIAL

A simple option for families that would like their loved-one's service held at the graveside only.

ALBERT COFFIN	<i>A solid pressed-board shouldered coffin with a maple-look veneer</i>	\$1,195
FLORAL SPRAY	<i>A small arrangement to adorn the coffin</i>	\$200
TRANSFER & MORTUARY CARE	<i>24/7 with no additional after-hour callout fees</i>	\$795
PROFESSIONAL FEES	<i>In addition to the caring staff that will walk you through the arranging of your loved-one's service, our professional fees also include the following:</i>	\$2,999
<ul style="list-style-type: none"> • A highly trained team of funeral professionals that will look after your loved-one in our own mortuary facilities • A hearse for the transfer of your loved-one from our funeral home to the place of service • BOSE PA system hire • Death registration with the department of Births, Deaths and Marriages • One (1) certified copy of the death certificate • Cemetery application forms and applicable documentation • RSL poppy service if required 		
NOTE: Burial fees are not included in this package		TOTAL PACKAGE PRICE including GST \$5,189





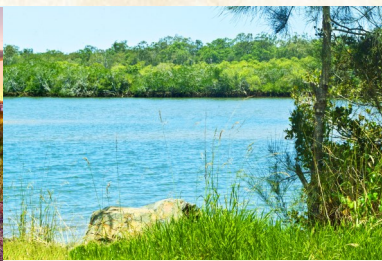
SILVER BURIAL

CHAPEL HIRE	<i>Service held in a local chapel before the burial takes place at the chosen cemetery (approx.)</i>	\$600
ENDEAVOUR COFFIN	<i>A solid pine coffin with a raised lid and routed edges (choice of natural or rosewood finish)</i>	\$3,195
FLORAL SPRAY	<i>A traditional-sized arrangement to adorn the coffin</i>	\$300
ORDERS OF SERVICE	<i>50 thoughtfully designed programs unique to your loved-one's service</i>	\$125
FUNERAL CELEBRANT	<i>A professional celebrant to personalise and conduct a service to honour your loved-one</i>	\$450
PICTURE PRESENTATION	<i>Our design team will organise your photos into a beautiful presentation for the day</i>	\$195
TRANSFER & MORTUARY CARE	<i>24/7 with no additional after-hour callout fees</i>	\$795
PROFESSIONAL FEES	<i>In addition to the caring staff that will walk you through the arranging of your loved-one's service, our professional fees also include the following:</i>	\$3,495

- A highly trained team of funeral professionals available 24/7 to assist with your loved-one's service
- A hearse for the transfer of your loved-one from our funeral home to the place of service
- Memorial signing book design and publication
- Photo frame for atop coffin
- A private family viewing in our viewing lounge facilities if requested
- Death registration with Births, Deaths and Marriages
- One (1) certified copy of the death certificate
- Crematorium application forms and applicable documentation
- RSL poppy service if required

NOTE: Burial fees are not included in this package

TOTAL PACKAGE PRICE including GST **\$9,155**





GOLD BURIAL

CHAPEL HIRE	<i>Service held in a local chapel before the burial takes place at the chosen cemetery (approx.)</i>	\$600
MORETON BLACKWOOD	<i>an elegant casket showcasing beautiful Tasmanian blackwood</i>	\$4,495
FLORAL SPRAY & CHURCH ARRANGEMENTS	<i>A traditional-sized arrangement to adorn the coffin with two potted arrangements to sit either side</i>	\$630
ORDERS OF SERVICE	<i>50 thoughtfully designed programs unique to your loved-one's service</i>	\$125
FUNERAL CELEBRANT	<i>A professional celebrant to build and conduct a service to honour your loved-one's life</i>	\$450
PICTURE PRESENTATION	<i>Our design team will organise your photos into a beautiful presentation for the day</i>	\$195
TRANSFER & MORTUARY CARE	<i>24/7 with no additional after-hour callout fees</i>	\$795
PROFESSIONAL FEES	<i>In addition to the caring staff that will walk you through the arranging of your loved-one's service, our professional fees also include the following:</i>	\$3,495
<ul style="list-style-type: none"> • A highly trained team of funeral professionals available 24/7 to assist with your loved-one's service • A hearse for the transfer of your loved-one from our funeral home to the place of service • Memorial signing book design and publication • Photo frame for atop coffin • A private family viewing in our viewing lounge facilities if requested • Death registration with Births, Deaths and Marriages • One (1) certified copy of the death certificate • Crematorium application forms and applicable documentation • RSL poppy service if required 		

NOTE: Burial fees are not included in this package

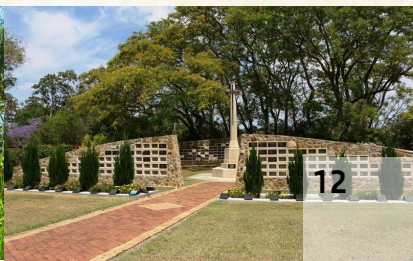
TOTAL PACKAGE PRICE including GST **\$10,515**





PLATINUM BURIAL

CHAPEL HIRE	<i>Service held in a local chapel before the burial takes place at the chosen cemetery</i>	\$550
DA VINCI CASKET	<i>A beautiful solid maple casket featuring a shaped dome lid, beige velvet interior, gloss finish and rounded bar handles. This amazing casket also comes with a keepsake Pieta Statue</i>	\$8,500
FLORAL SPRAY & CHURCH ARRANGEMENTS	<i>A full casket arrangement to adorn the coffin with two potted arrangements to sit either side</i>	\$780
FUNERAL CELEBRANT	<i>A professional celebrant to build and conduct a service to honour your loved-one's life</i>	\$450
PICTURE PRESENTATION	<i>Our design team will organise your photos into a beautiful presentation for the day</i>	\$195
ORDERS OF SERVICE	<i>75 8-page booklets that will guide guests through the service and serve as a unique memento of their lost loved-one, showcasing photos, poetry, readings, recipes, paintings or anything you can think of to reflect the life of your loved-one. Each pamphlet has a personalised bookmark placed inside.</i>	\$300
TRANSFER & MORTUARY CARE	<i>24/7 with no additional after-hour callout fees</i>	\$795
DOVE RELEASE	<i>Two doves to be released by family at the conclusion of the committal</i>	\$275
PROFESSIONAL FEES	<i>In addition to the caring staff that will walk you through the arranging of your loved-one's service, our professional fees also include the following:</i>	\$3,495
<ul style="list-style-type: none"> • A highly trained team of funeral professionals available 24/7 to assist with your loved-one's service • A hearse for the transfer of your loved-one from our funeral home to the place of service • Memorial signing book design and publication • Photo frame for atop coffin • A private family viewing in our viewing lounge facilities if requested • Death registration with Births, Deaths and Marriages • One (1) certified copy of the death certificate • Cemetery application forms and applicable documentation • RSL poppy service if required 		
NOTE: Burial fees are not included in this package		TOTAL PACKAGE PRICE including GST \$15,340



COFFINS



ALBERT

\$1,195.00

- Paper Veneered Composite Board
- Maple, Matt Finish



COOTHARABA

\$1,495.00

- Paper Veneered Composite Board
- Oak, Matt Finish
- Single Raised Lid



OXLEY

\$1,795.00

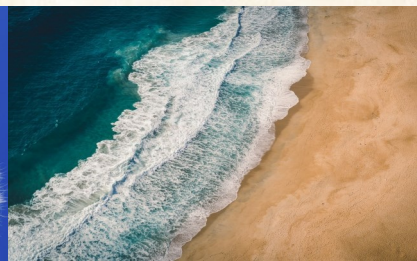
- Paper Veneered Composite Board
- Teak with Walnut Shade, Gloss Finish
- Single Raised Lid
- Fluted Mouldings



MAROON

\$2,095.00

- Paper Veneered Composite Board
- Rosewood Colour, Gloss Finish
- High Tiered Lid
- Fluted Base Mould



COFFINS



ADMIRAL

\$2,495.00

- Timber Veneered Composite Board
- Walnut Colour, Gloss Finish
- Scalloped Lid
- Routed Sides



SUSAN

\$2,495.00

- Paper Veneered Composite Board
- White Colour, Gloss Finish
- Single Raised Lid
- Base Mould



GEORGINA

\$2,795.00

- Paper Veneered Composite Board
- Metallic Colour Finish
- Single Raised Lid
- Routed Lid and Sides



ENDEAVOUR

\$3,195.00

- Solid Plantation Pine
- Choice of Clear or Rosewood Finish
- High Tiered Lid
- Three Side Panels and Fluted Base Mould



COFFINS



BRISBANE

\$3,495.00

- Solid Sapele
- Low Sheen Finish
- Contemporary Design & Curved Lid
- Elegant Brass Handles



CAMPHOR LAUREL

\$3,895.00

- Solid Camphor Laurel
- Gloss Finish
- Single Raised Lid
- Timber Swing Bar Handles



BLACKWOOD

\$3,895.00

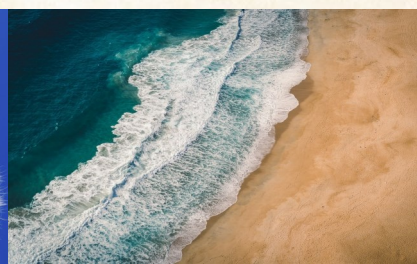
- Solid Tasmanian Blackwood
- Low Sheen, Natural Finish
- Carved Corners & Fluted Mouldings
- Timber Swing Bar Handles



AMBASSADOR

\$3,895.00

- Solid Cedar
- Gloss Finish
- Sculpted Double Raised Lid with Corner Pillars
- Fluted Moulding



CASKETS



NORMANBY

\$3,195.00

- Solid Plantation Pine
- Walnut Colour, Gloss Finish
- Full-Couch Hinged Lid
- White Satin Drapery



MORETON ROSEWOOD

\$3,495.00

- Solid Plantation Pine with Rosewood Gloss Finish
- Full-Couch Hinged Lid
- Octagonal End Design
- Ivory Satin Drapery



MORETON BLACKWOOD

\$4,495.00

- Solid Tasmanian Blackwood with Natural Low-Sheen Finish
- Full-Couch Hinged Lid
- Octagonal End Design
- Deluxe Cream Satin Drapery



HEAVENLY WHITE

\$5,995.00

- Solid Poplar in White Gloss Finish
- Domed Half-Couch Hinged Lid
- Mist Copper Tone Swing Bar Handles on All Sides
- White Crepe Interior



CASKETS



MONARCH

\$5,995.00

- Solid Poplar in American Cherry with High Gloss Finish
- Domed Half-Couch Hinged Lid
- Timber Handles on All Sides
- Champagne Linen Interior



DA VINCI

\$8,500.00

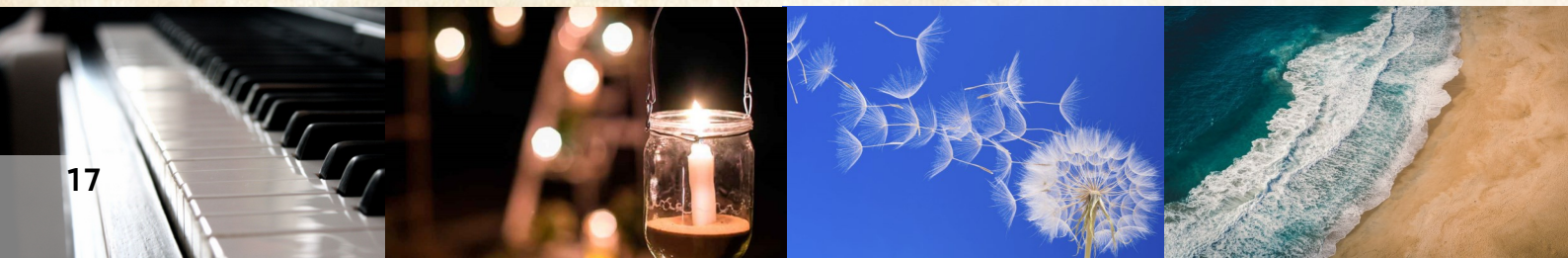
- Solid Maple in Antique Cherry with High Gloss Finish
- Domed Half-Couch Hinged Lid
- Da Vinci's Last Supper and Pietà Adornments
- Beige Velvet Interior



BORDEAUX

\$12,000.00

- Solid Cherry in Garnet with Hand Polished, High Gloss Finish
- Domed Half-Couch Hinged Lid
- Elegant Gold Mylar Beading with Rounded Timber Handles
- Ivory Basket Weave Interior



ECO-FRIENDLY OPTIONS



NORTH PINE

\$2,095.00

- Solid Plantation Pine
- Raw Finish
- Six Rope Handles
- Unbleached Calico Lining



WICKER

\$2,495.00

- 100% Basketry Wicker
- Rounded Ends with Rope Handles
- Biodegradable Lining
- Cotton Calico Drapery



NORTH PINE CASKET

\$2,495.00

- Solid Plantation Pine
- Raw Finish
- Six Rope Handles
- Unbleached Calico Lining



SERENE LEGACY

\$2,795.00

- Natural Pure New Wool Outer Layer
- Strong Frame Made from Recycled Materials
- Generously Lined with Cotton
- Complete with Woollen Mattress and Cotton Pillow



STEEL CASKETS

FOR BURIALS & VAULTS



EL DORADO

\$18,000.00

- 48 oz Solid Bronze
- Classic Midnight Brushed Finish
- 14 Carat Gold Plated Hardware
- Pearl Velvet Interior



PURITAN

\$9,500.00

- 16 Gauge Steel
- Brushed Copper Glow & Autumn Finish
- Artubus Velvet Interiors
- Da Vinci's Last Supper and Pietà Adornments



GARRISON

\$8,500.00

- 18 Gauge Steel
- Rich Cashmere Grey Finish
- Cap Panel allows for Display of Photos
- Ivory Basket Weave Interior



WHITE ROSE

\$7,500.00

- 18 Gauge Steel
- White with Rose Shaded Finish
- Embroidered Rose Cap Panel
- Shirred Light Pink Velvet Interior

PREARRANGING A FUNERAL

At the time of a loved one's passing, families not only have to make decisions about the location and time of the service. They also have to consider the type of service they would like to create, the music selection, the casket or coffin that their loved one will be laid to rest in and the flowers. This is not to mention all of the personal details that a funeral home needs to register a death with Births, Deaths and Marriages (covered on the following page).

For many, this process is an added stress to what is already a very difficult time in their lives. A prearranged funeral is an easier way of providing you and your family with comfort and contentment at the time of a funeral.

Pre-planning a funeral

- is simple
- doesn't take long
- provides you with peace of mind
- can all be done in the comfort and privacy of your own home.

HOW DOES IT WORK?

Pre-planning a funeral is as simple as sitting down with one of our caring funeral directors and chatting about your life or the life of your loved one. We will record all of your wishes, along with any legal information required to register a death so that your loved ones can focus on more important things when the time comes. You will also receive a copy of any recorded details so that everyone can stay on the same page during the planning process.

All of this can be done in the comfort of your own home at a time that suits you. The informal consultation is both cost and obligation free. Not only can you discuss your own options, but you can also pre-plan a relative's service, rather than being overwhelmed with last minute decision making at the time of their passing.

Call us today to book in a time for a chat and a cuppa. **07 3285 5155**



COMPLETING YOUR PERSONAL INFORMATION FOR DEATH REGISTRATION

At the time of passing, those left behind to arrange the funeral are responsible for providing us with the deceased's personal information. This information is necessary for the registration of death with Births, Deaths and Marriages (BDM) in order to receive the official death certificate.

At Kenton Ross Funerals, we will complete all the necessary requirements to register the death and also apply for the death certificate on your behalf. This registration and application process will occur after the cremation or burial service has been held. It may take BDM 10-15 working days to process the paperwork and for the official death certificate to be issued by mail to the applicant.

The personal information form over leaf may be completed ahead of time. By lodging it with us, you can save your family the burden of sourcing this information themselves from old records and certificates etc. When the time comes, we will simply check the information with your family to ensure that nothing has changed in the time leading up to your passing.

As well as lodging your information with our funeral home, members of our team are also available via phone or appointment to talk with you and your family about how you can take the next step in the process: pre-arranging and planning your funeral needs.



PERSONAL INFORMATION FOR DEATH REGISTRATION

Name: _____

Address: _____

Date of birth: ____/____/____

City/Town of birth: _____

If not born in Australia year arrived: _____

Occupation during working life: _____

Retired: Yes / No

Aboriginal / Torres Strait Islander / Both / Neither

Marriage status: _____

If widowed, place and date of death of wife/husband:

First Marriage Details (if applicable)

Place of marriage: _____

Age at marriage: _____

Spouse (Full name prior to marriage):

Second Marriage Details (if applicable)

Place of marriage: _____

Age at marriage: _____

Spouse (Full name prior to marriage):

Children

[illegible]

Father

Name: _____

Occupation: _____

Mother

Name (full maiden name): _____

Occupation: _____

NOTES

[illegible]

FUNERAL REQUESTS

Cremation / Burial

Personal items to adorn coffin:

Church / Chapel / Other: _____

Address of Service: _____

Viewing: Yes / No

Eulogy/Tributes to be spoken by:

RSL Service: Yes / No

Music:

Special Requests:

Minister/Celebrant:

Poems/Readings/Prayers:

Flowers (type | colour | size):

Don't forget that the funeral belongs to you and your family. Don't feel as though you're bound by what you see on this page. In the past, we have opened funeral services with the audio from the Melbourne Cup, printed secret hand-written cookie recipes into the orders of service, parked a motorcycle next to the coffin inside the chapel, invited family and friends forward to write thoughts and prayers on the coffin and much more. The more information you give us, the more we can help you and your family make this farewell a unique one that will be remembered with fondness and love for years to come.



PROMOTING PROFESSIONAL
FUNERAL STANDARDS
FOR OVER 80 YEARS.

WHY CHOOSE AN AFDA MEMBER?

Australian Funeral Directors Association (AFDA) Members and the AFDA Trademark represents security, care and professional service. Formed in 1935, the AFDA is the only national funeral service organisation with member firms in every state and territory. We, along with other AFDA member firms, are chosen by the majority of families to provide funeral arrangements for their loved-ones. We are bound by a strict code of ethics and code of conduct designed to meet both community needs and expectations in all aspects of service delivery. The code is a reassurance to the community of sincere care and professional service, particularly at a time of uncertainty and distress for grieving family and relatives.

Prospective member firms must comply with required standards for premises, equipment and vehicles (PEV) before AFDA membership is granted.

The AFDA develops and promotes professional standards in the funeral industry. In conjunction with its membership, community groups and professional expertise, the AFDA has developed several standards for industry practice. These are based upon fundamental and legitimate occupational health and safety, public health, legal and community standards. AFDA member firms are required to abide by these standards.

The AFDA is widely recognised as the authoritative voice on all funeral matters in Australia. For your own peace of mind, select a funeral director who is an accredited member of the AFDA.

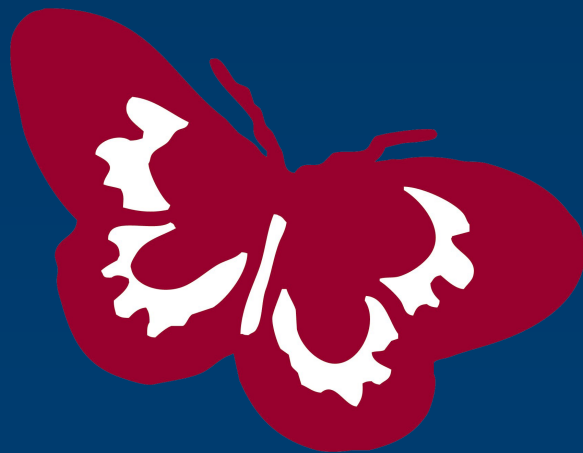


AUSTRALIAN
FUNERAL
DIRECTORS
ASSOCIATION

You can shed tears that they are gone
Or you can smile because they lived.
You can close your eyes and pray that they will come back
Or you can open your eyes and see all they have left.
Your heart can be empty because you can't see them
Or you can be full of the love you shared.
You can turn your back on tomorrow and live yesterday
Or you can be happy for tomorrow because of yesterday.

You can remember them and only that they are gone
Or you can cherish their memory and let it live on.
You can cry and close your mind, be empty and turn your back
Or you can do what they'd want
– smile, open your eyes, love and go on.

-David Harkins



Kenton Ross Funerals

krfunerals.com.au